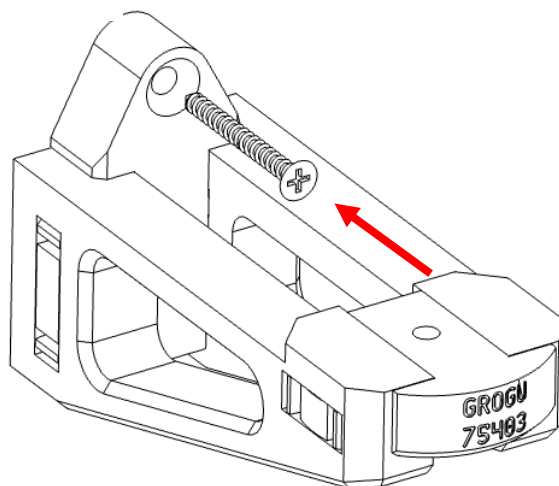
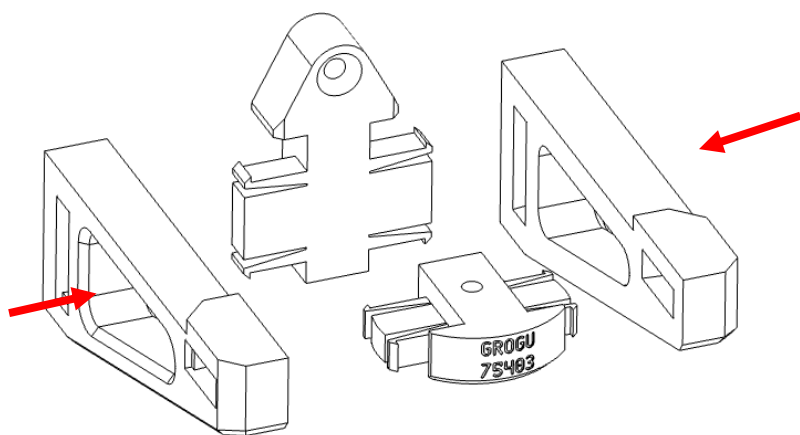
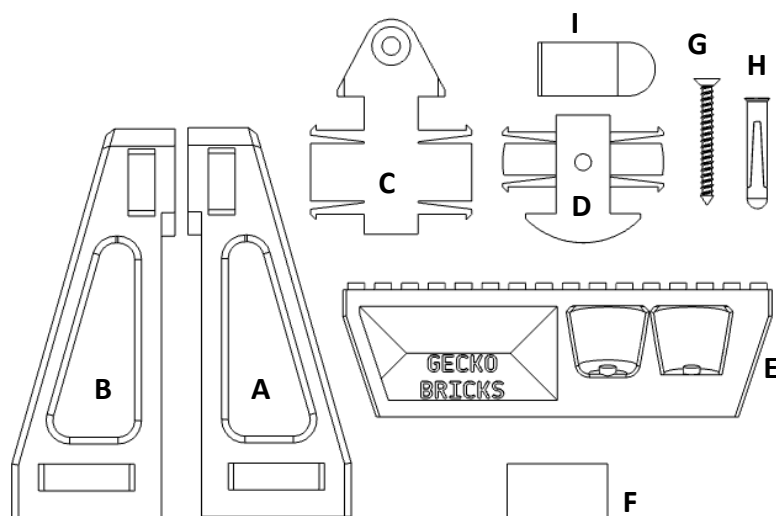


## Wall Mount Instructions

### Grogu With Pram – (75403)

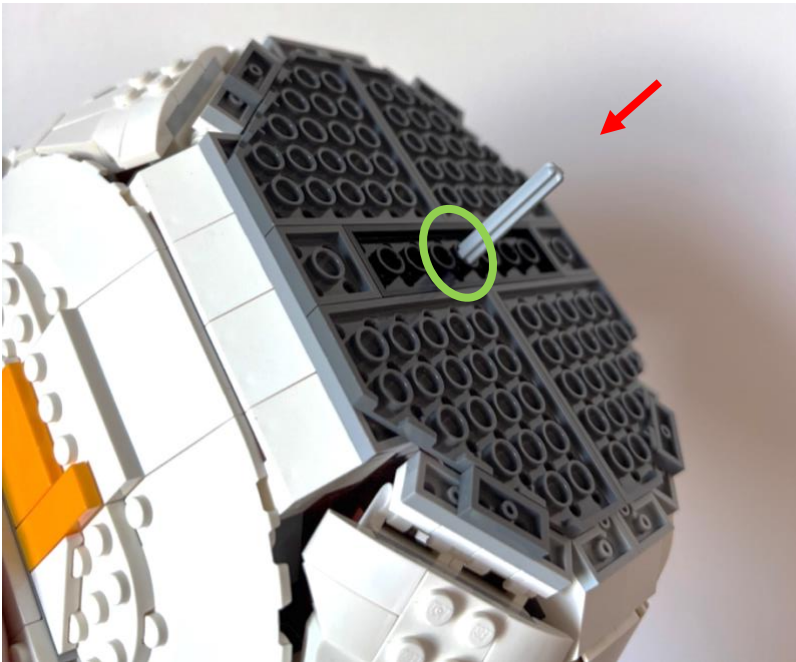
#### Kit Contents:

- A. 1x Left Arm
- B. 1x Right Arm
- C. 1x Back plate
- D. 1x Front plate
- E. 1x Info card mount
- F. 1x Info card mount cleat
- G. 1x Wall Screw
- H. 1x Wall Plug

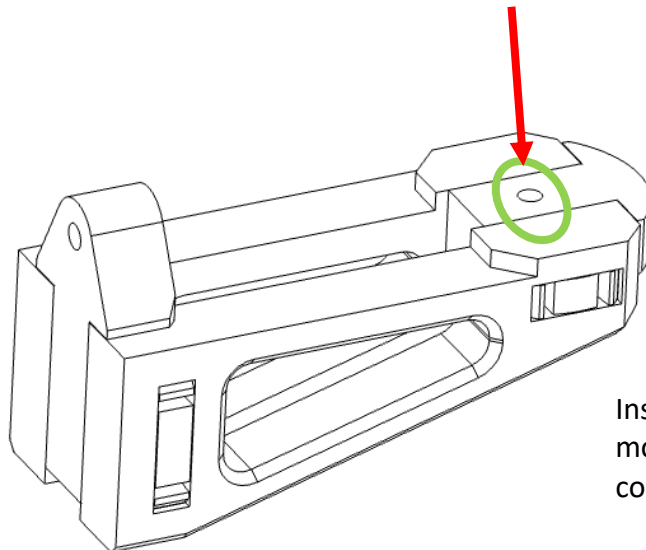


Do not over tighten the wall  
screw

## Wall Mount Instructions Grogu With Pram – (75403)



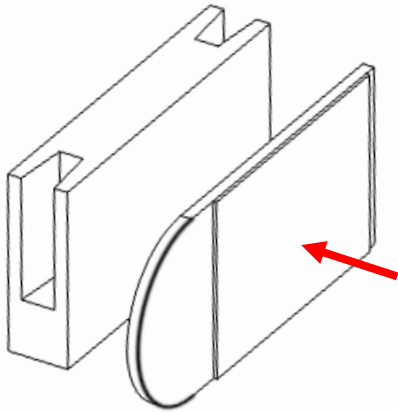
Use the grey technic axle from the original Lego set display mount



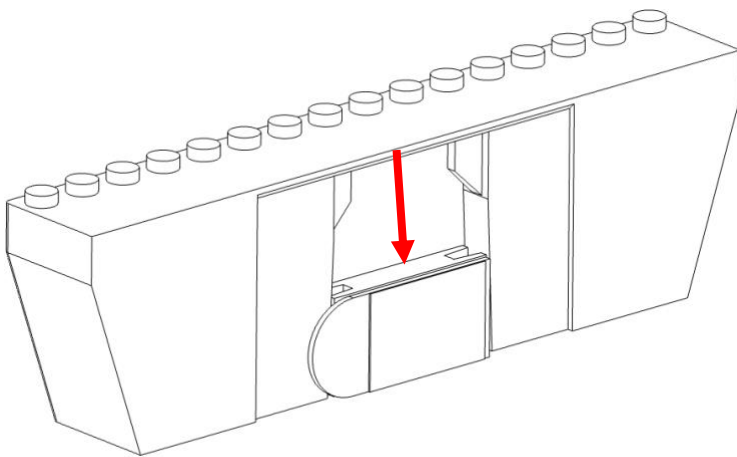
Insert the pram into the wall mount using the grey axle and corresponding hole

## Wall Mount Instructions Grogu With Pram – (75403)

### Info Card Mount



Use the 3M command strip to adhere the cleat to the wall. Press firmly to fully adhere the command strip.



Slide the mount over the cleat to secure it to the wall.

Seat the Info card stand here

Place Grogu's items here

